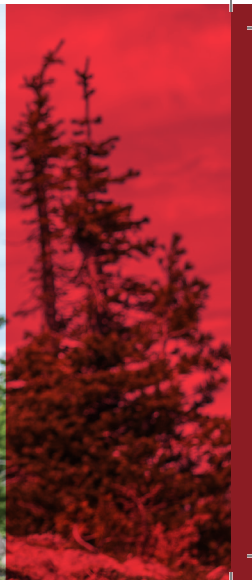




BARREL MANUAL & WARRANTY





Congratulations on the purchase of your PROOF Research barrel. At PROOF Research we're committed to creating superior barrels and complete rifle systems for the serious shooter. Our goal is to outperform everything else on the market and instill lifelong devotion in our customers. Please read this manual in its entirety before installing and using your barrel.



WARNING

Firearms safety is your responsibility and must be the first and constant consideration of every person who handles firearms and ammunition. Before and during handling or cleaning your firearm follow all applicable gun safety precautions and guidelines, including, but not limited to, the following:

1. Be certain the firearm chamber and magazine are unloaded and the safety is in the “ON” (Safe) position.
2. Treat every firearm as if it's loaded, even when you're certain that it's not.
3. Keep your finger off the trigger until you're ready to fire.
4. Never point the muzzle of your rifle at anything you're not willing to destroy.
5. Never leave firearms or ammunition where they would be accessible to children.
6. Store firearms and ammunition securely in separate locations.

**Firearms safety is your responsibility.
Make it part of your DNA!**

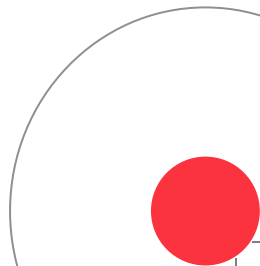
INSTALLATION —

Installing your PROOF Research barrel requires special tools and should only be performed by a qualified gunsmith.

BARREL BREAK-IN —

Don't overthink barrel break-in! The purpose of barrel break-in is to smooth out any micro-roughness and remove some initial copper in the bore. We recommend a very simple shoot and clean process: Shoot three, clean, shoot five, clean (see cleaning instructions on page 6).

NOTE: Never use bullets coated with molybdenum compounds (moly-coated) during the break-in period. Moly-coated ammunition should not be used until at least 100 rounds of standard copper-jacketed bullets have been fired. PROOF Research does not recommend the use of moly-coated ammunition in general.



CLEANING —

In order for it to function safely and reliably, your PROOF Research barrel should be routinely cleaned and made free of rust, dirt, grease and firing residue. Always clean your firearm before and after long-term storage. Clean your firearm whenever it's been exposed to moisture or dirt, mud, sand or grime. Dirt, powder residue, or oil in the chamber can cause malfunctions. Any failure to feed or extract a round may indicate a dirty chamber.

RECOMMENDED SOURCES FOR CLEANING SUPPLIES:

Cleaning Solvent: Butch's Bore Shine, Hoppe's #9, Shooter's Choice

Copper Remover: KG12, CR-10, Butch's Bore Shine

One-Piece Cleaning Rod: Dewey, Parker-Hale, Outers

Bronze Wire Brush: Sinclair International, Brownells

Bore Guide: Possum Hollow, Sinclair International

Brush Cleaner: CRC Brakleen

CLEANING PROCEDURE__

NOTE: PROOF Research recommends always using a bore guide to protect the barrel throat from bowed or misaligned cleaning rods. Do not use brushes made from materials other than nylon or bronze as they can damage the internal surface of your barrel.

1. Check the chamber and magazine to ensure the firearm is completely unloaded.
2. Remove bolt.
3. Always clean the barrel from the chamber end to the muzzle (the direction of bullet travel). To remove loose powder residue, run three wet patches through the full length of the barrel using

a high quality one-piece coated rod, bronze bore brush, and powder fouling removing solvent. Let the barrel sit for five or ten minutes (follow solvent manufacturer's instructions).

4. Run one wet patch soaked with solvent through the barrel to remove any dissolved powder residue.
5. For heavier fouling soak a bronze wire brush with solvent and brush the barrel several times. Push the brush through the bore until it extends beyond the muzzle. (Never reverse the direction of the brush while in the bore.) Run three more wet patches through the barrel and let the solvent work for another ten minutes.

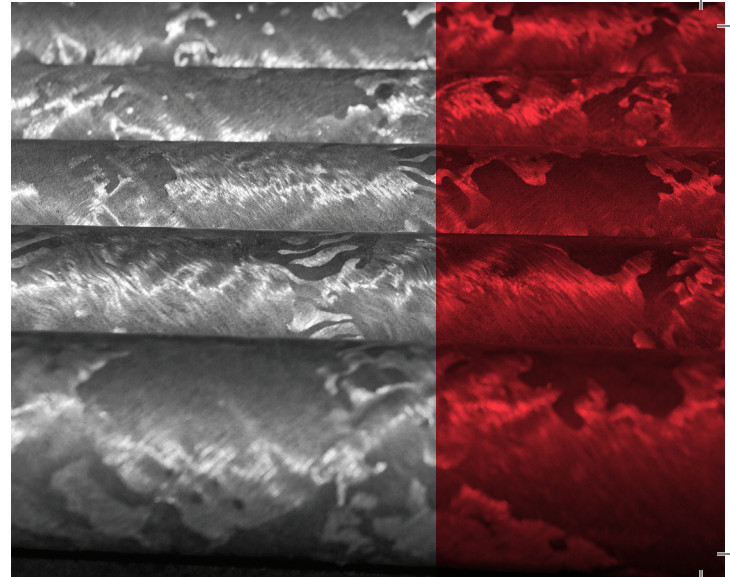
6. Run three dry patches through the barrel or until the patches come out dry.

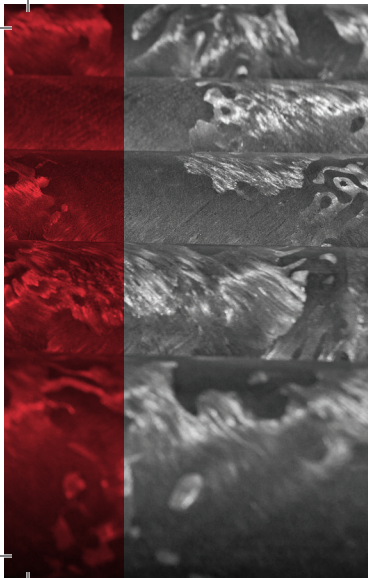
7. Follow steps 3 through 6 until the patches come out clean.

Inspect the interior of the bore for copper fouling. Modern cartridge jackets are made mainly of copper. Copper residue sticks to the barrel and can require more rigorous cleaning. A copper solvent may be necessary to remove copper fouling. Follow the manufacturer's directions when using a copper solvent.

8. After all fouling has been removed and the chamber and bore are dry, pass a slightly oiled patch through it for storage. A fine, light gun oil is recommended.

NOTE: Before firing, all excess lubrication should be removed and the chamber and bore should be thoroughly wiped dry.





AMMUNITION

WARNING: Only use ammunition of the caliber that is inscribed on the side of your barrel. Examine every cartridge you put in your firearm to ensure that it is undamaged and of the correct caliber.

PROOF Research will not warranty any damages or injury due to faulty, nonstandard, “remanufactured” or hand-loaded ammunition. Reloading is the consumer’s sole liability. Use caution with wildcat cartridges as some do not have SAAMI (Sporting Arms and Ammunition Manufacturers’ Institute) approved dimensions.

AMMUNITION —

1. Use only commercial-grade ammunition in its original packaging that corresponds with the caliber of your gun. The correct caliber is inscribed on the side of the barrel. You are responsible for selecting ammunition that meets industry standards and is appropriate in type and caliber.
2. Never use reloaded, wet, corroded, bent, dented, damaged or waxed ammunition.
3. Never mix ammunition.
4. Never leave ammunition unattended.
5. Store ammunition securely in a separate location from your firearm.

WARNING: Ammunition contains lead. Always wash your hands after firing or handling ammunition.



WARRANTY INFORMATION__

We are proud to say that we receive an extremely low number of warranty inquiries. Of those few, most prove to be caused by improper installation or some other factor unrelated to our product. Please diligently evaluate all possible causes of functionality issues before making a warranty claim. If a customer returns a product for evaluation and our inspection and testing prove it to be of proper manufacture, functionality and accuracy, we reserve the right to charge a nominal fee to cover the cost of the inspection and testing.

PROOF Research stands behind its products. If a warranty claim is merited, we are easy to work with and will make every reasonable effort to ensure that the customer is satisfied.

PROOF Research guarantees only those products manufactured by PROOF Research. Your warranty card must be on file with the factory within 30 days of delivery in order for the warranty to be valid. The warranty is only applicable to the original owner who has registered his or her ownership with PROOF Research.

Before leaving the factory, your PROOF Research barrel was inspected and carefully packaged. PROOF Research has no control over product handling after it leaves the factory.

What Your Warranty Covers

Your PROOF Research barrel is warranted against defects in material and workmanship. If the barrel is defective in any way it should be returned to us. If after receipt and inspection of the barrel PROOF Research determines that defects have occurred due to manufacturing, all parts and labor, or replacement or refund will be covered at our discretion.

What Your Warranty Does Not Cover

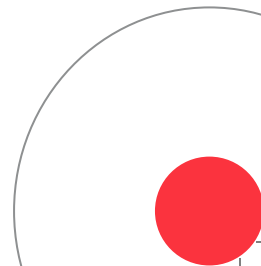
- Any component not manufactured by PROOF Research.
- Cryogenically treated metal work.
- Normal wear or barrel throat erosion.
- Damage that is determined by PROOF Research to be the result of abuse, neglect, misuse, corrosion, improper care, or improper handling or installation.
- Damage due to the use of wrong caliber ammunition or ammunition other than high-quality, commercially-manufactured ammunition in good condition.
- Damage due to natural causes or damage during shipping.
- Damage or malfunction due to alterations, unauthorized adjustments, parts replacement or service by anyone other than a PROOF Research technician.

Warranty Continued

Transportation to and from our repair facilities, government fees, damage caused by failure to perform normal maintenance, sales outside the United States, damage due to high velocity, high pressure, reloaded or other nonstandard ammunition, or any unauthorized repair, modification, misuse, abuse or alteration of the product is not covered by this Limited Warranty. Consequential or incidental damages and/or expenses, or any other expenses are not covered by this warranty.

Accuracy— Because the barrel is only one component of many that make up a complete rifle system, we cannot guarantee the accuracy of our barrels unless they are purchased as part of a complete PROOF Research rifle system that has been assembled in our factory by an authorized PROOF Research technician.

This Limited Warranty gives you specific legal rights. You may also have other legal rights, which vary from state to state. Some states do not allow limitations on how long an implied warranty lasts, so some limitations or exclusions may not apply to you.



**CUSTOMER SERVICE
& REPAIRS**



If you have a question, suspect a warranty problem, or need assistance with your PROOF Research product, please contact the factory at **(406) 756-9290** or email us at **info@proofresearch.com**. Please do not return any product to use without first contacting customer service and obtaining a Return Merchandise Authorization (RMA) number. Having your serial number available (if applicable) will help us expedite your service.

If a PROOF Research representative determines that a product should be returned for service, you will be asked to ship it to our factory.

NOTE: Possession of a Federal Firearms License (FFL) is not required to ship a rifle. Federal law allows consumers to ship a firearm directly to the factory in the event of a warranty service claim.

Please follow these instructions for shipping and handling:

- 1. Before shipping, ensure that the rifle is unloaded.**
2. Pack your firearm carefully using a case designed for shipping rifles.
3. Remove scope, slings and all other accessories unless otherwise specified by a PROOF Research technician.
4. Include the model number, serial number, description of damage or problem, name, return address, phone number, and under what circumstances the problem occurs.
5. Keep a record of your serial number when returning the firearm.
6. Clearly mark your return shipping address on the outside of the box and inside on your instruction sheet.
7. Do not ship live ammunition with the rifle.

Ship to the following address:

PROOF Research
10 Western Village Lane
Columbia Falls, MT 59912



Making **Accuracy** Commonplace.



PRBW1015

PROOF Research

10 Western Village Lane
Columbia Falls, Montana 59912

406-756-9290

www.proofresearch.com